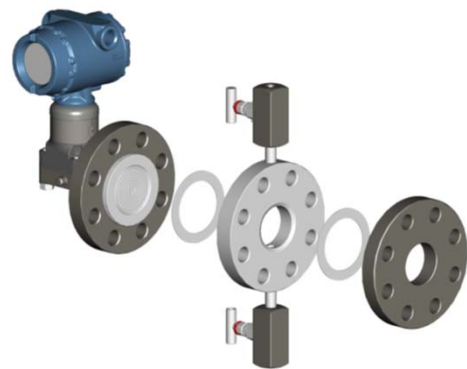


FLUSHING RING



MODEL : DHIF- FR100 SERIES

DAEHAN & DS INSTRUMENT



APPLICATIONS

- Cleans diaphragm seals
- Improve diaphragm seal surface cleaning, with injection flushing
- A convenient method to access process fluid for sampling
- No removal of instrumentation or disassembly of process connections

SPECIFICATIONS

- Flushing Ring Type
 - Flat Face Type(Bolt Through)
 - Raised Face Type
 - Ring Joint Type
 - Reducing Type
 - Special(Spiral) Type
- Flange Ratings
 - JIS 10, 16, 20, 30k
 - ANSI class 150, 300, 600, 900, 1500#
 - DIN class PN06, 16, 40, 63, 100, 160
- Acceptable range of pipe size
 - DN25 ~ DN100 (1" ~ 4")
- Material
 - Carbon steel
 - Stainless steel (304,316,321,347 etc.)
 - Low Alloy (A335-P5,P9,P11,P12,P22,P91 etc.)
 - Duplex (UNS S31803, S32750 etc.)
 - Special (HASTELLOY C276, MONEL etc.)

DESCRIPTION

"DAEHAN & DS INSTRUMENT CO.,LTD" FLUSHING RING is designed to be applied to almost any flows flow condition. FLUSHING RING technology enables clean management of pipes using diaphragm seals and saves cost and time. In addition, FLUSHING RING allows vent and drain. Elements are designed for clean or dirty service and are offered in various materials, pipe sizes, and pressure ratings.

BENEFITS

- Easy to upgrade or replace
- Available in flanged, ring type, reducing type and spiral type designs, multiple materials, sizes and ratings.
- Multiple valve types

FLUSHING RING



MODEL : DHIF- FR100 SERIES

DAEHAN & DS INSTRUMENT

FLUSHING RING TYPE

▶ Ring Type
(Model : DHIA-FR110)



▶ Ring-RTJ Type
(Model : DHIA-FR120)



▶ Flanged FF/RF Type
(Model : DHIA-FR130/140)

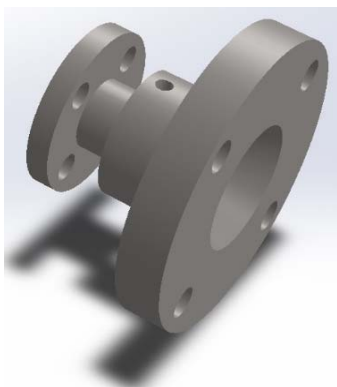


▶ Flanged RTJ Type
(Model : DHIA-FR150)

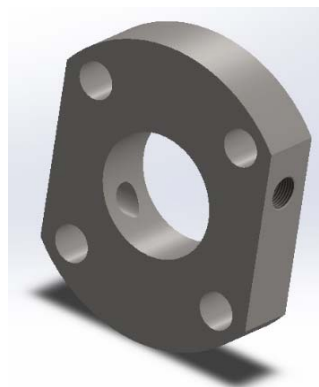


SPECIAL TYPE

▶ Reducing Type
(Model : DHIA-FR160)



▶ Spiral Type
(Model : DHIA-FR170)



FLUSHING RING



MODEL : DHIA- FR100 SERIES

DAEHAN & DS INSTRUMENT

ORDERING INFORMATION

Main order	CODE		DESCRIPTION
1. Base Model	DHIA-FR100 SERIES		Base Model
2. Type	FR110		Ring Type
	FR120		Ring-RTJ Type
	FR130		Flanged FF Type
	FR140		Flanged RF Type
	FR150		Flanged RTJ Type
	FR160		Reducing Type
	FR170		Spiral Type
3. Line Size	□□□ A		Pipe Size (mm)
4. Ring	A		316SS(316L)
	B		304SS(304L)
	C		Carbon Steel
	O		Option
5. Flange Rating	015		ANSI/ASME 150LB
	030		ANSI/ASME 300LB
	060		ANSI/ASME 600LB
	090		ANSI/ASME 900LB
	150		ANSI/ASME 1500LB
	000		Option
6. Connection	1		1/4" NPT,F
	2		3/8" NPT,F
	3		1/2" NPT,F
	4		3/4" NPT,F
	5		Option
7. Taps Q'ty	S		1 PAIR
	T		2 PAIR
	O		Option
8. Valve Type	EX		Excluded(Plug Only)
	NE		Needle Valve
	BA		Ball Valve
	GA		Gate Valve
	GL		Globe Valve
	OO		Option
9. Valve Q'ty	1		1 Valve/1 Plug
	2		2 Valve/2 Plug
	0		Option

HISTORY OF D&DI



MODEL : DHIA- FR100 SERIES

DAEHAN & DS INSTRUMENT

